

Estadistics for August/2016

September 1, 2016

Arina

In this brief document we show the usage of arina during August. This month 49686 computing days where used and the the average use of the cluster was 86 %. Since the first of December 461274 computing days where used and the the average use of the Arina cluster was 90 %. The figure shows the usage of Arina along the month. In the first table the usage of each user is shown. The third column indicates all the time each user has used for calculation during this month. The fourth column shows the average time that each job was waiting before the it started running, in days units. In the second table, the same data as in table 1 collected by group is shown.

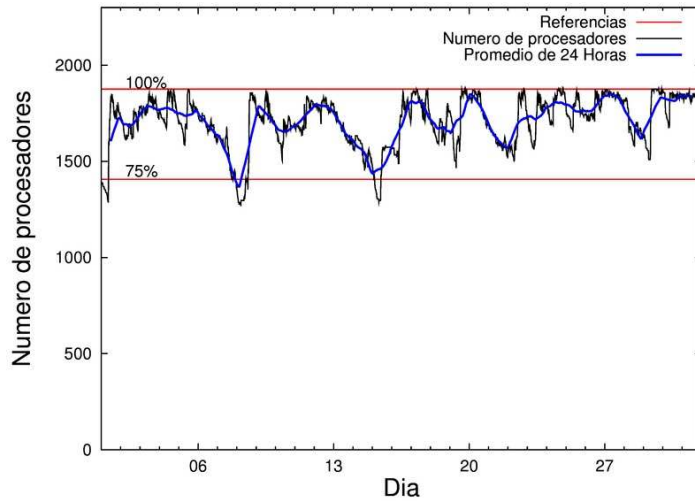


Figure 1: Cluster use. The blue line is a 24 hours average.

Table 1: Calculated time and waiting time in days of the users.

USER	GROUP	Calculated Days	Waiting Time
csazusej	nanogune	12801.07	0.36
povhehea	poahh	5032.66	0.61
poamaxg	polymat	4327.65	2.59
poalocad	polymat	4155.48	0.15
bckmimoj	qfjfg	2635.36	0.85
quainbea	qfjfg	2566.95	0.76
enxararo	egune	2319.36	0.84
quxmarur	qfjfg	1954.88	1.49
kixgrazr	potmb	1921.58	0.24
enxcacaj	egune	1767.87	1.27
juranga004	potmb	1719.73	0.21
quaurhei	qfjfg	1423.50	0.27
qfbgoroj	qfjfg	1373.57	0.34
kiadadag	pojju	1270.44	1.22
povrucif	polymat	479.88	0.17
pobrease	potmb	427.13	0.35
pobmelat	arinadm	425.06	0.03
qopgobee	qocpn	399.76	0.04
anpgaetk	anjbc	272.23	0.23
quxlegoa	qfjfg	249.44	0.11
doxcarei	poxlp	226.53	0.17
pobmugoj	pomps	220.88	0.13
qfpmamoh	qfila	188.10	0.02
sckwankm	waars	177.51	0.14
qoaarecl	qofcm	173.06	0.09
pobfoese	poxlp	166.84	0.02
pobcacad	pojju	130.51	0.17
ciazuulm	pojju	91.52	0.04
scavinam	poemg	82.71	0.09
pobmabej	potmb	74.00	0.02
popugurj	pojju	70.77	0.00
poajejec	polymat	61.28	0.01
ciaansap	pojju	54.72	0.02
qoparaya	qofcm	49.34	0.04
dixsasam	pojju	48.03	0.01
bixbrdem	gbdga	47.96	0.07
wubcavaa	wuash	46.17	0.46
pobgrgrs	pomps	44.57	0.00
pobrease	polymat	41.25	0.01
poasobas	pojju	38.25	0.18
kivpepor	kirpp	32.28	0.17
kixsasal	pojju	25.62	0.63
quvvalom	qfjfg	25.44	0.03
povmieci	pojju	21.71	0.11
kibderua	qofcm	12.88	0.02
ciaarme	pojju	6.89	0.01
qopcomof	qofcm	5.17	0.00

pobromam	pomps	3.07	0.04
webogare	arinadm	0.51	0.00
ggplaarj	ggmer	0.11	0.46
mapalmau	qtftp	0.01	0.33

Table 2: Calculated time and waiting time in days of the groups.

GROUP	Calculated Days	Waiting Time
nanogune	12801.07	0.36
qfjfg	10229.14	0.53
polymat	9065.54	0.17
poahh	5032.66	0.61
potmb	4142.44	0.20
egune	4087.23	1.23
pojju	1758.46	0.17
arinadm	425.56	0.03
qocpn	399.76	0.04
poxlp	393.37	0.14
anjbc	272.23	0.23
pomps	268.51	0.10
qofcm	240.44	0.07
qfila	188.10	0.02
waars	177.51	0.14
poemg	82.71	0.09
gbdga	47.96	0.07
wuash	46.17	0.46
kirpp	32.28	0.17
ggmer	0.11	0.46
qtftp	0.01	0.33

Arina Data Storage Top Users

In the following graph we plot the users having more data in Arina in the last month. If you appear in this graph, we strongly encourage you to reduce your data in Arina.

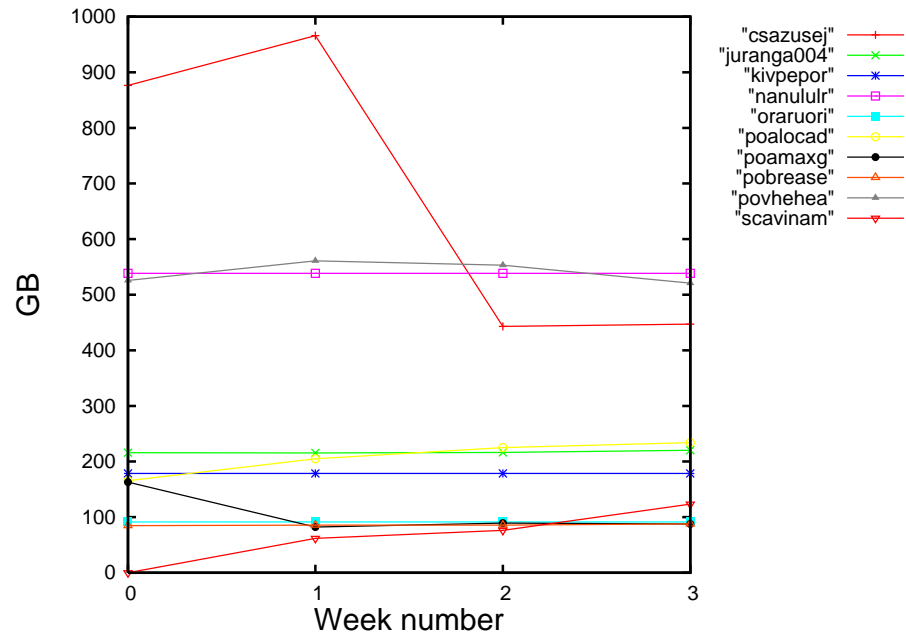


Figure 2: Storage evolution in the last month in GB.