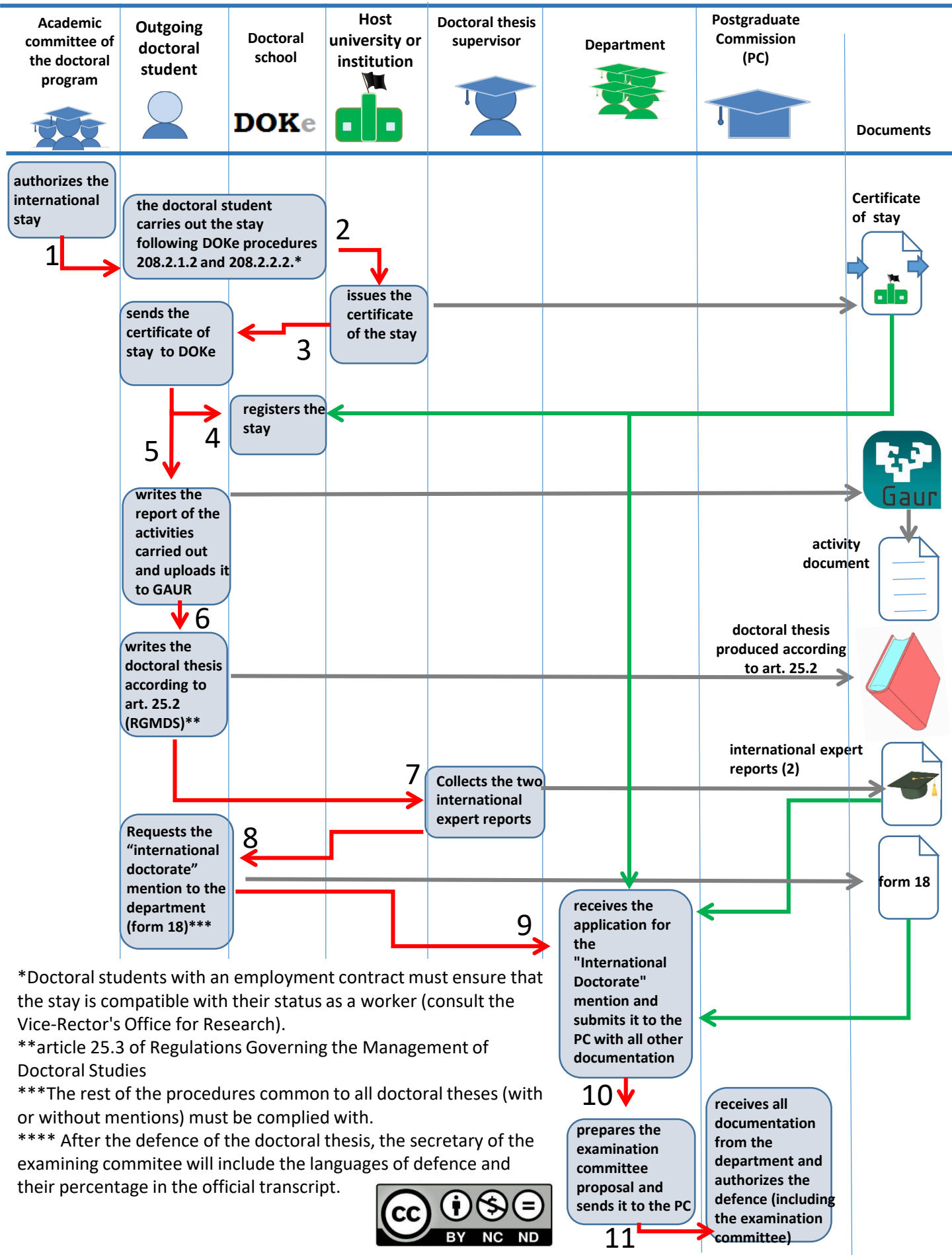


# "INTERNATIONAL DOCTORATE" MENTION



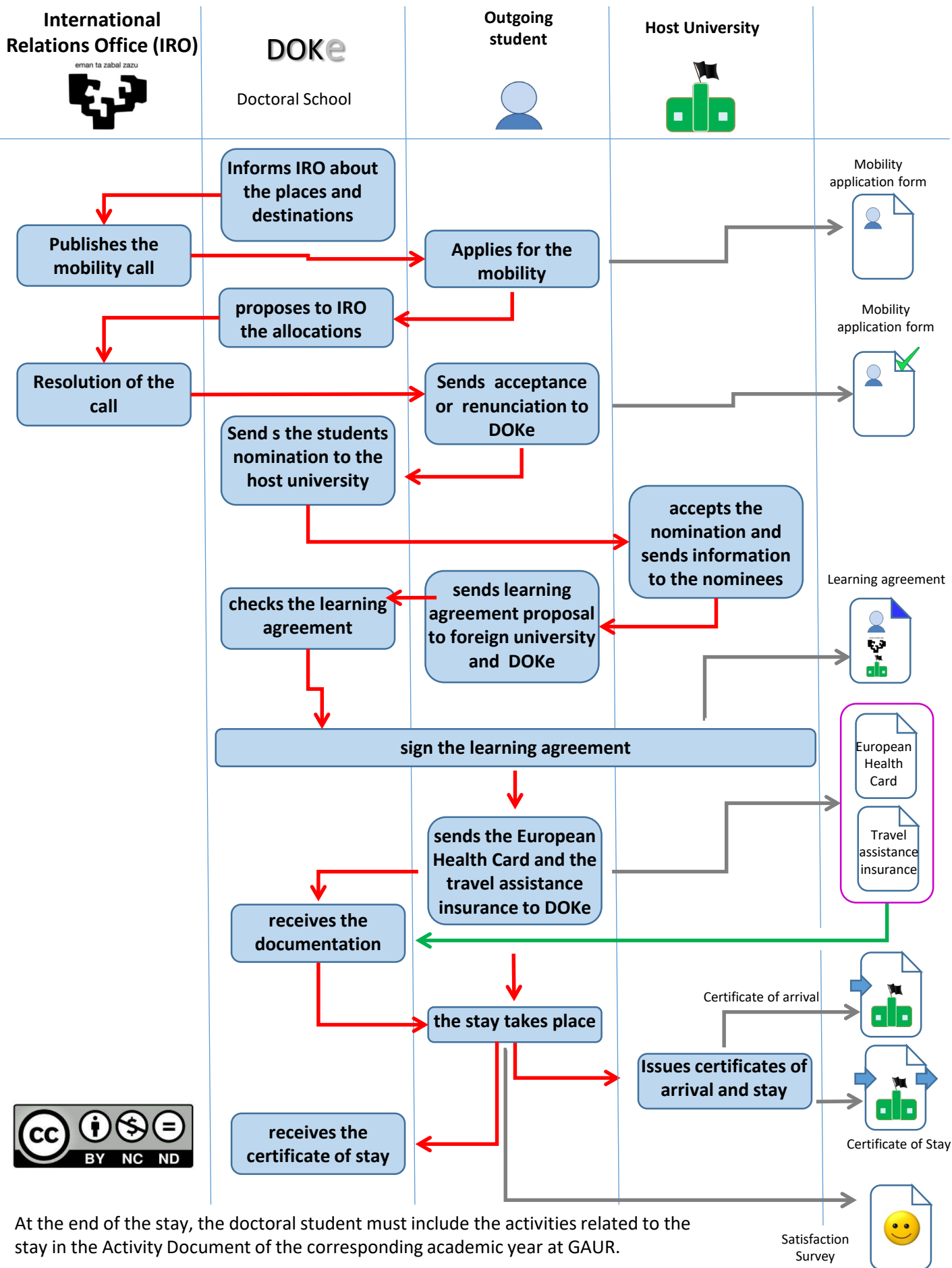
\*Doctoral students with an employment contract must ensure that the stay is compatible with their status as a worker (consult the Vice-Rector's Office for Research).

\*\*article 25.3 of Regulations Governing the Management of Doctoral Studies

\*\*\*The rest of the procedures common to all doctoral theses (with or without mentions) must be complied with.

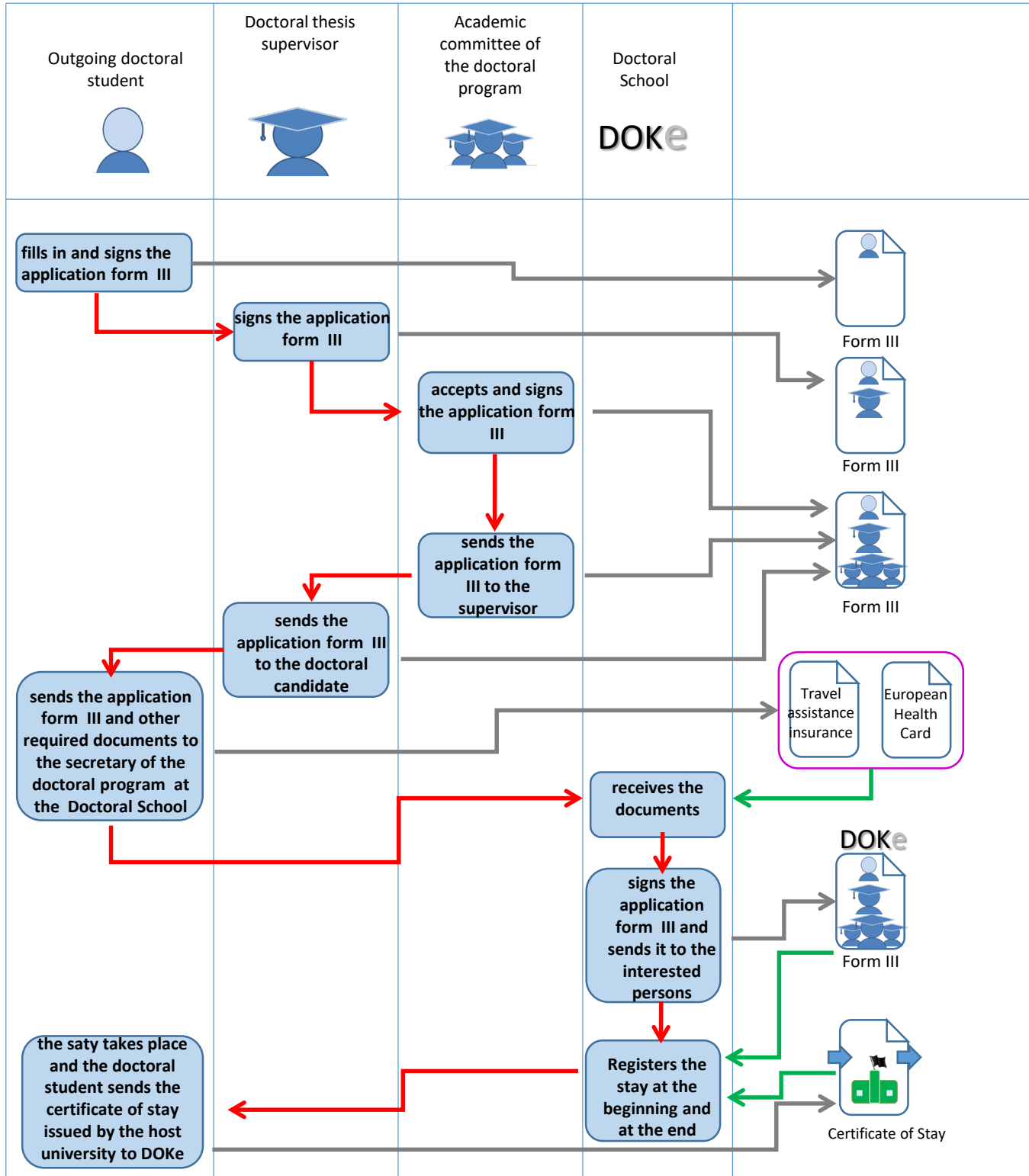
\*\*\*\* After the defence of the doctoral thesis, the secretary of the examining committee will include the languages of defence and their percentage in the official transcript.

# ERASMUS+ OUTGOING MOBILITY: (208.2.1.2)



At the end of the stay, the doctoral student must include the activities related to the stay in the Activity Document of the corresponding academic year at GAUR.

# OTHER STAYS: HOME INSTITUTION=FOREIGN UNIVERSITY (208.2.2.2)



At the end of the stay, the doctoral student must include the activities related to the stay in the Activity Document of the corresponding academic year at GAUR.