

# MMO

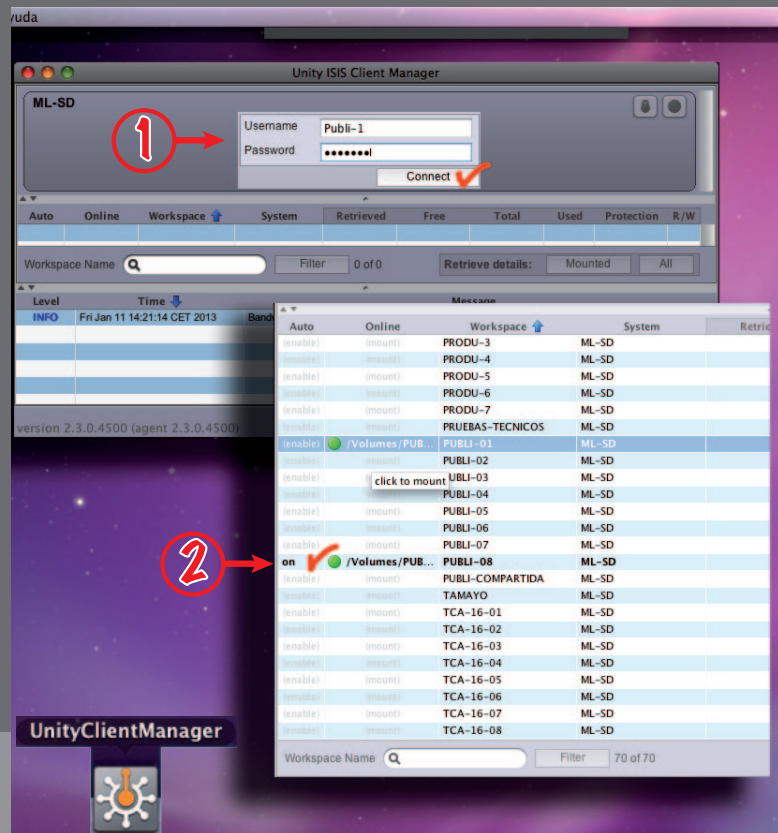
## KAPTURA / CAPTURA

VTR

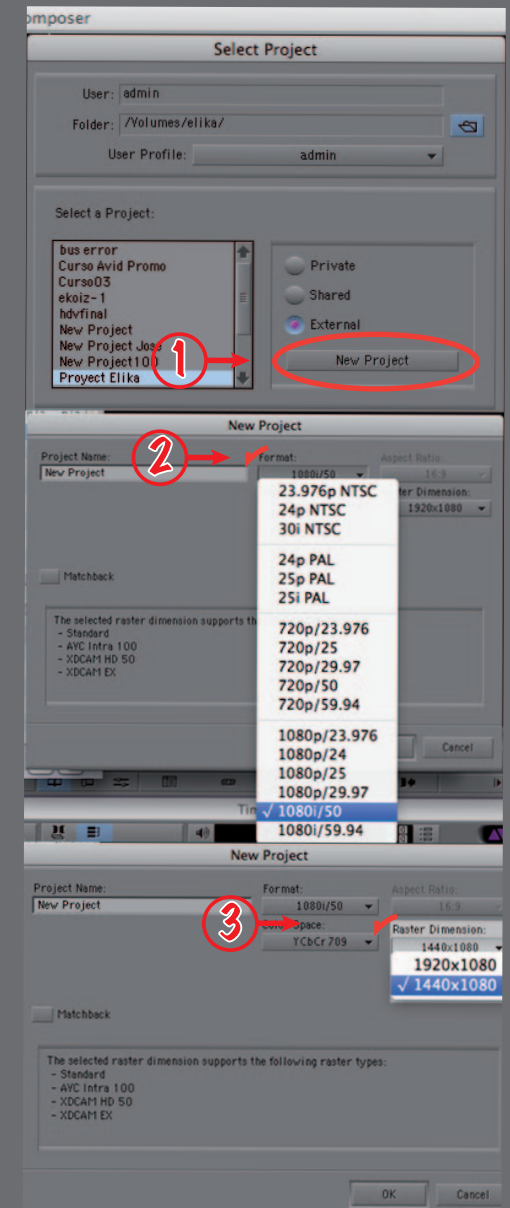


i

## Unity Client Manager



## Media Composer > New Project



## 2.



### 3.



## Media Composer > Settings > Media creation

The screenshot shows the 'Media Creation - Current' settings window in Avid Media Composer. The 'Drive Filtering & Indexing' tab is selected. Annotations include:

- 2**: Points to the 'Filter Network Drives Based on Resolution' checkbox, which is checked.
- 3**: Points to the 'Video Resolution' dropdown menu, which is set to 'HDV 1080i MXF'.
- 4**: Points to the 'Video Drive' dropdown menu, which is set to 'PUBLI-01 [ML-SD]'.
- 1**: Points to the 'Media Creation' option in the 'Settings' sidebar on the left.

The 'Media Creation - Current' window shows the following settings:

- Video Resolution: HDV 1080i MXF
- Video Drive: elika [ML-SD]
- Audio Drive: [Empty]
- Apply to All: [Button]

The 'Media Creation - Current' window also shows a table of settings:

Slot	Data Type	DID	SDID	Enable
1	Closed Captions (CEA 708)	61	01	<input checked="" type="checkbox"/>
2	Closed Captions (CEA 608)	61	02	<input checked="" type="checkbox"/>
3	Active Format Descriptor	41	05	<input checked="" type="checkbox"/>
4	Ancillary Time Code (ATC)	60	60	<input checked="" type="checkbox"/>

The 'Media Creation - Current' window also shows the 'Ancillary Data Mode Setting' with 'SMPTE 436M' selected.

The 'Settings' sidebar on the left shows the 'Media Creation' option selected.

## Media Composer > Format

The screenshot shows the 'Format' window in Avid Media Composer. The 'Project Type' dropdown menu is open, showing options: 1080i/50, 25p PAL, 25i PAL, 720p/25, 1080p/25, and 1080i/50 (selected). The 'Raster Dimension' dropdown menu is also open, showing options: 1920x1080, 1440x1080 (selected), and 1920x1080.

Annotations include:

- 2**: Points to the 'Project Type' dropdown menu.
- 2**: Points to the 'Raster Dimension' dropdown menu.

The 'Format' window shows the following settings:

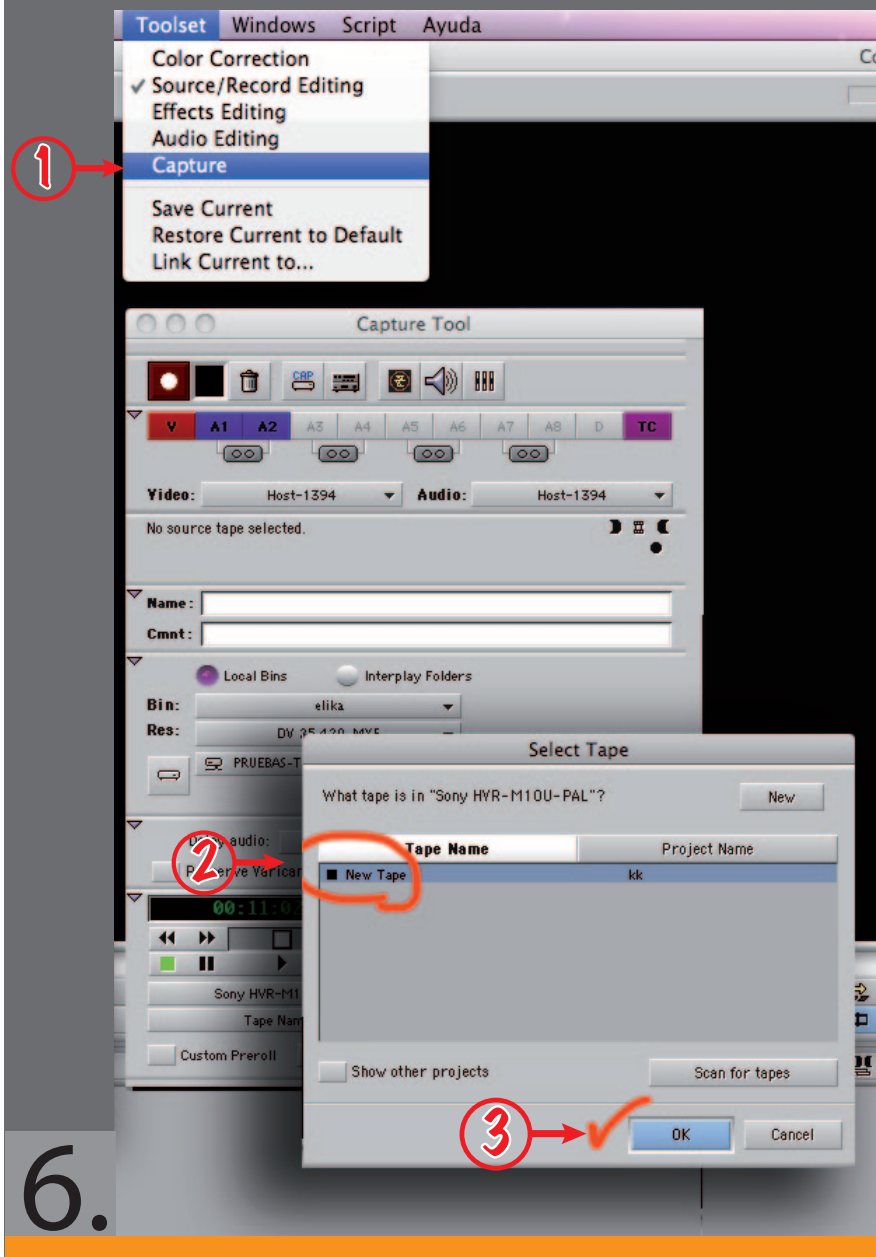
- Project Type: 1080i/50
- Aspect Ratio: 16:9
- Raster Dimension: 1920x1080
- Color Space: YCbCr 709

The 'Format' window also shows a list of supported raster types for the selected raster dimension:

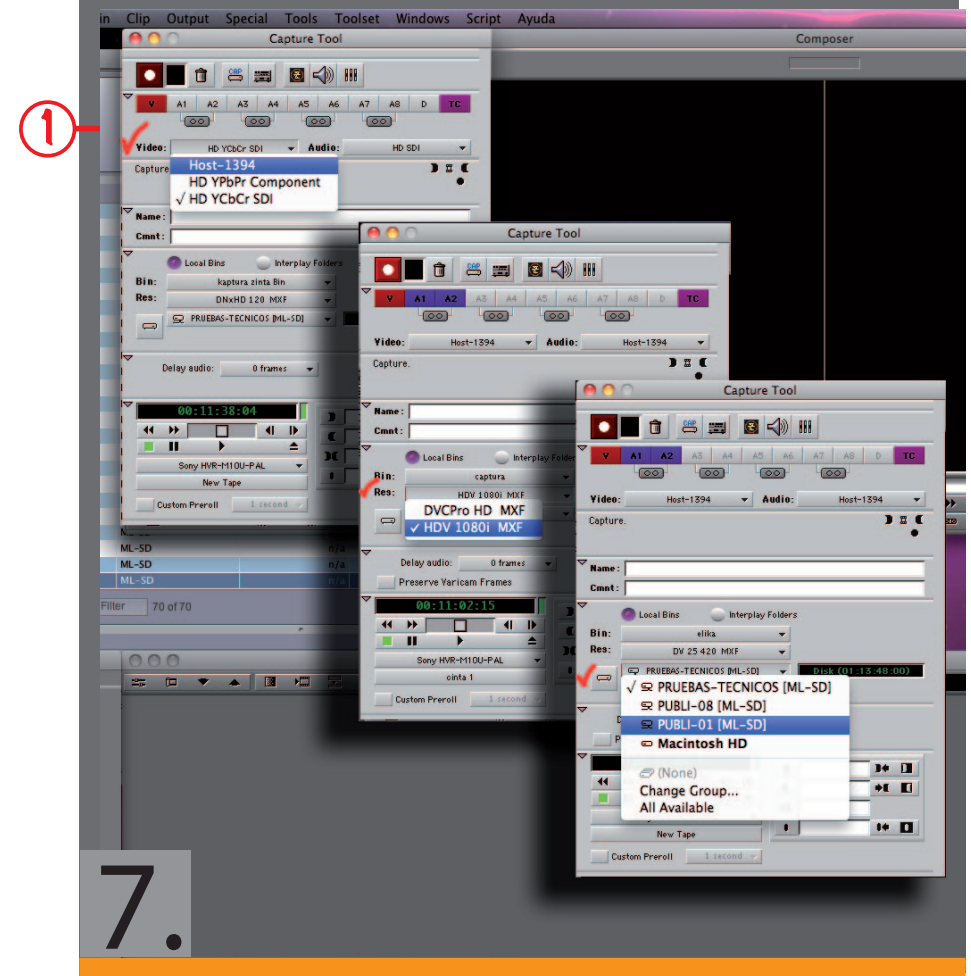
- Standard
- AVC Intra 100
- XDCAM HD 50
- XDCAM EX



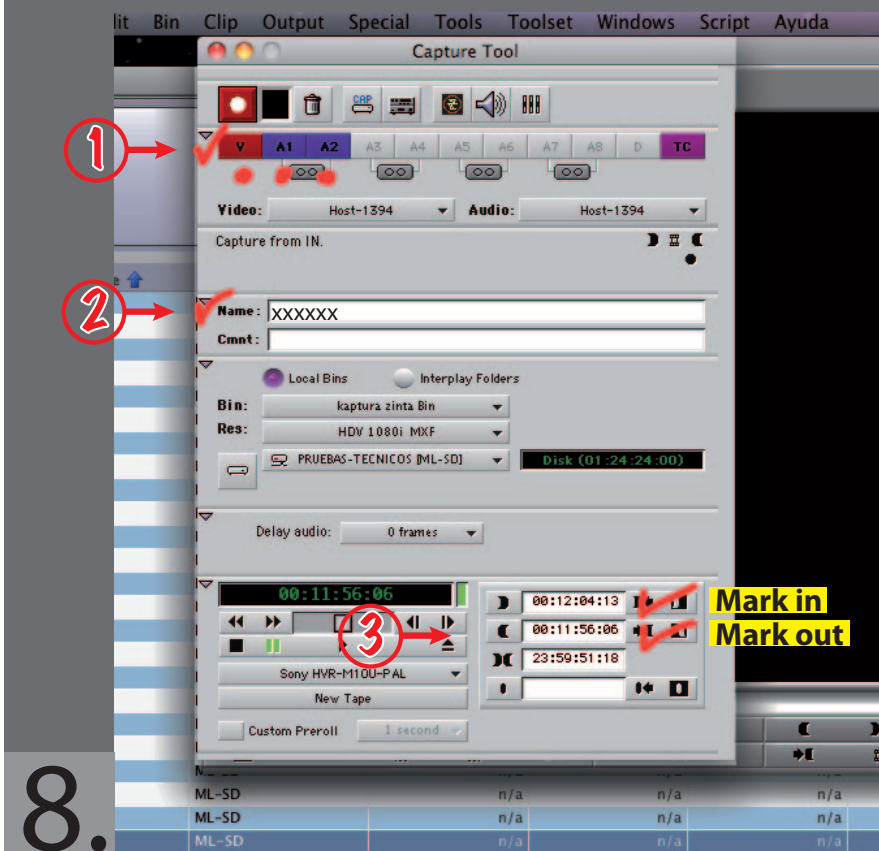
## Media Composer > Toolset > Capture



## Media Composer > Toolset > Capture



## Media Composer > Toolset > Capture



## Media Composer > Toolset > Capture

