

# ELECTRONIC PRODUCT ENGINEERING

# Who we are

- | We are part of ULMA Group, one of the largest business groups in northern Spain
- | Team: 20 engineers, highly qualified and customer oriented
- | Located in Gipuzkoa – Northern Spain



# Who we are

- | We offer specialised consulting, design, development & testing services
- | Along the whole custom embedded product lifecycle
- | Software, Hardware and Programmable Logic
- | Focused on Safety-and Mission-Critical applications

# Partners



Systems & Software



Systems Testing



Hardware Testing

| Tools



| Silicon & Tools



| Research & Knowledge

# Certifications



**3** Functional Safety  
Engineers in HW/SW  
Design according to  
IEC-61508



**10** Professionals for  
Requirements  
Engineering  
Foundation Level



**2** people certified  
in CANoe



**5** in IBM Rational DOORS  
**3** in IBM Rational Rhapsody  
**1** in IBM RQM



**1** TestStand CTD  
**1** LabVIEW CLAD  
**1** LabVIEW CLD

# Services

## Lifecycle Consulting and Tool Integration

- | We participate in the safety certification process
- | Tools choice and combination keeping traceability through the whole process
- | Verification & Validation activities and their evidences

# Services

## Product Development

- | Conceptualization, design, test and validation of the full product, including CE marking
- | We deliver finished products

user requirements      user acceptance testing  
system requirements      systems testing  
technical architecture      integration testing  
Detailed Design      unit testing  
model  
implementation

# Services

## Testing

- | We offer testing teams to manage the full test process
- | We can help in Static and/or Dynamic testing
- | For assembled PCB, PL, SW or the full system





# Services

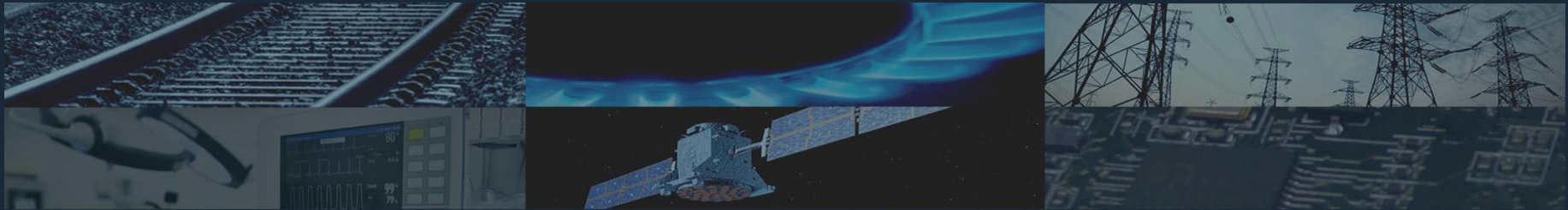
## Technological Collaboration

- | We collaborate with the customer
- | Filling the gaps they have in any technological area



# Sectors

- | Railway
- | Medical
- | Industrial & Household appliances
- | Aerospace
- | Energy
- | Industrial Automation



# Safety experience

## RAILWAY

FPGA design for SIL4 railway application



### *Scenario*

A manufacturer of railway products requires specialized hardware and programmable logic design for its new rack-based control platform, certified according to IEC-61508 and EN-50155.

### *Solution*

In close collaboration with the customers' team ULMA Embedded Solutions develops the main CPU board and several FPGA blocks for both the CPU and peripheral boards.



# Safety experience

## MEDICAL

Hardware / FPGA / Software /  
Certification process



### *Scenario*

A manufacturer of medical therapy equipment requires specialized design services to leap from their legacy defibrillator to a whole new product line.

### *Solution*

In close collaboration, the customer and ULMA Embedded Solutions have designed several defibrillator variants. FPGA technology contribute BOM cost saving, reduced obsolescence risk, added DSP capabilities together with the inherent flexibility that the technology offers.



# Safety experience

## APPLIANCES

IEC-60730 class C software specification, design and test

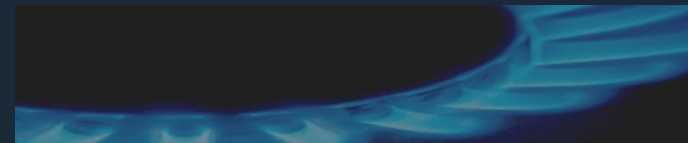


### *Scenario*

A household appliance components manufacturer requires expertise in functional safety software development and certification for brand new gas burner controller.

### *Solution*

In close collaboration in a trusty atmosphere a software product line is being developed. Also the customer is gaining confidence on the certification process.



# Safety experience

## SPACE

FPGA design for ESA's Galileo  
EGNOS RIMS Core Computer



### *Scenario*

A software technology leader attracted us to co-create our own European guidance solution for free citizens from military governments.

### *Solution*

The main purpose of the solution is to encode the corrected position data to send to the satellites that will eventually spread the message across Europe. Quality was ensured by a gemini FPGA design that test each other.



# Technology risk mitigation

## SPACE

### *Scenario*

Safety related projects allow small room for technological innovation.

### *Solution*

We innovate with technology in non safety related projects. Once mastering it we reduce the risk of applying it in safety related projects.



# Novel technology experience

## ENERGY

High speed acquisition and processing

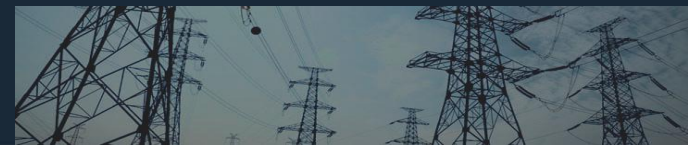
### *Scenario*

A provider of energy protection solutions requires support to refactor their functional prototype into marketable solution.

### *Solution*

Custom designed Q7 compliant ZYNQ module coupled to a base board that includes three 80Msps JESD-204 ADCs.

FPGA logic circuits and software on top of Linux running on the ARM core interact seamlessly using varied and powerful interconnection mechanisms.





# Novel technology experience

## INDUSTRIAL

Vybrid based on-chip distributed architecture solution for industrial controller

### *Scenario*

A manufacturer of industrial household appliances required a user friendly controller for its new washing-machine product line.

### *Solution*

We developed a custom Freescale Vybrid based module and an application specific carrier board. We take advantage of the asymmetric ARM dual cores to separate machine control time criticality from state-of-the-art user interface experience.



# Novel technology experience

## ENERGY

CPU update with iMX287

### *Scenario*

A microcontroller of the main CPU and additional controllers were obsolete. Mechanical interfaces should be kept in their original position.

### *Solution*

Custom design with iMX287 reducing cost and improving the performance while mechanical constraints were respected.



# Critical applications

## Standards

Experience with Safety- and Mission-Critical standards

Root:

| IEC-61508

Machinery:

| ISO-13849

| IEC-62061

| IEC-61800-5

Railway:

| EN-50155

| EN-50128

Medical devices:

| IEC-60601

| ISO-14971

| IEC-62304

Household appliances:

| IEC-60730

EMC:

| EN-60335

| EN-61000

| EN-55025

| ISO-7637

# Technologies

## Systems

- | Requirement management with IBM Rational DOORS
- | V&V planning, strategy and specification with IBM RQM
- | Design, modeling with IBM Rhapsody and Mathworks Simulink
- | Testing with NI TestStand

# Technologies

## Software

- | Software modelling and design using UML: PRAGMA methodology
- | Architecture choices to cater for timeliness, safety, testability and management of software product variants

# Technologies

## Software

- | Model-Driven-Development (MDD), Test-Driven-Development (TDD) and Continuous Integration (CI) & C/C++
- | We integrate COTS tools, file systems and communication stacks
- | V&V: static code analysis, coding standards and style enforcement, unit, integration and validation testing

# Technologies

## Programmable logic

- | We develop programmable logic for custom and COTS hardware
- | Specialized in Xilinx technology
- | Description language: VHDL
- | Modeling: Mathworks Simulink

# Technologies

## Printed circuit board design

- | Designed to meet cost objectives, regulations for CE marking, safety standards, environmental conditions and mechanical constraints
- | For product variants, manufacturability and longevity
- | Testable, by manual and automated testing. We also design and implement the tests
  - XJTAG + functional test
  - HIL Techniques with NI LabVIEW and NI VeriStand



# Technologies

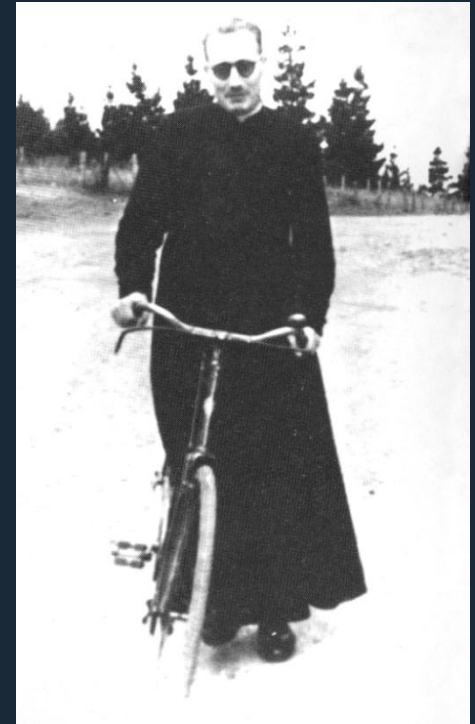
## Printed circuit board design

- | We can provide reliability data if required
- | CAD tool: Altium Designer
- | Processing units:
  - Freescale Quorivva (PXS-20), PowerQUICC, iMX, Vybrid, Kinetis, 9S08
  - Xilinx All-Programmable: ZYNQ, PicoBlaze

# Humanity at work

El ideal de la Juventud de Mondragón es hacer de este pueblo el **modelo** de los pueblos industriales de Guipúzcoa (1941).

La **enseñanza** y la **educación** son la primera empresa de un pueblo.



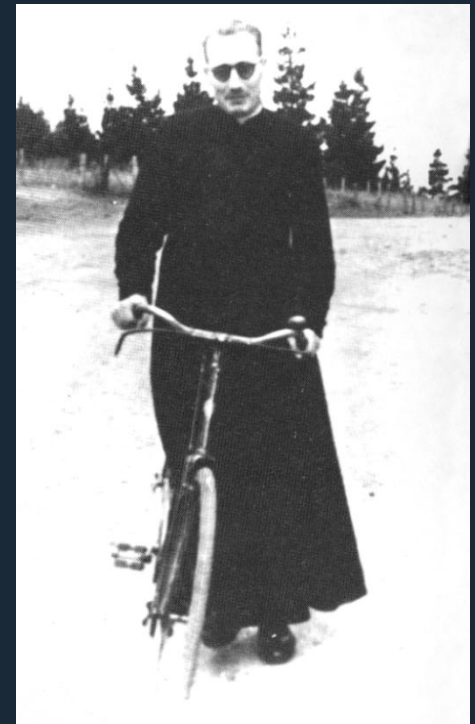
HUMANITY  
AT WORK

MONDRAGON



# Humanity at work

En la base de un cooperativismo sano debemos tener hombres que tengan un profundo sentido de **responsabilidad**, implicados personalmente en el proceso económico y sujetos a la presión social de su respectiva **comunidad**.



HUMANITY  
AT WORK

MONDRAGON

 **ULMA**  
Embedded Solutions

# #KooperAktivistak

We look for people who

- | **LOVE** their work. Are passionate about it.
- | **LOVE** to improve, to learn. Are critical.
- | **LOVE** to teamwork. Share knowledge.
- | **LOVE** themselves and other people.



HUMANITY  
AT WORK

MONDRAGON



# #KooperAktibistak



HUMANITY  
AT WORK

MONDRAGON

En la cooperativa todos somos responsables de todo.



# Contact us

## **ULMA Embedded Solutions S. Coop**

Garagaltza auzoa 51 – PK 77

20560 (Oñati) – Gipuzkoa – SPAIN

+34 943 250 300

[info@ulmaembedded.com](mailto:info@ulmaembedded.com)

[www.ulmaembedded.com](http://www.ulmaembedded.com)

