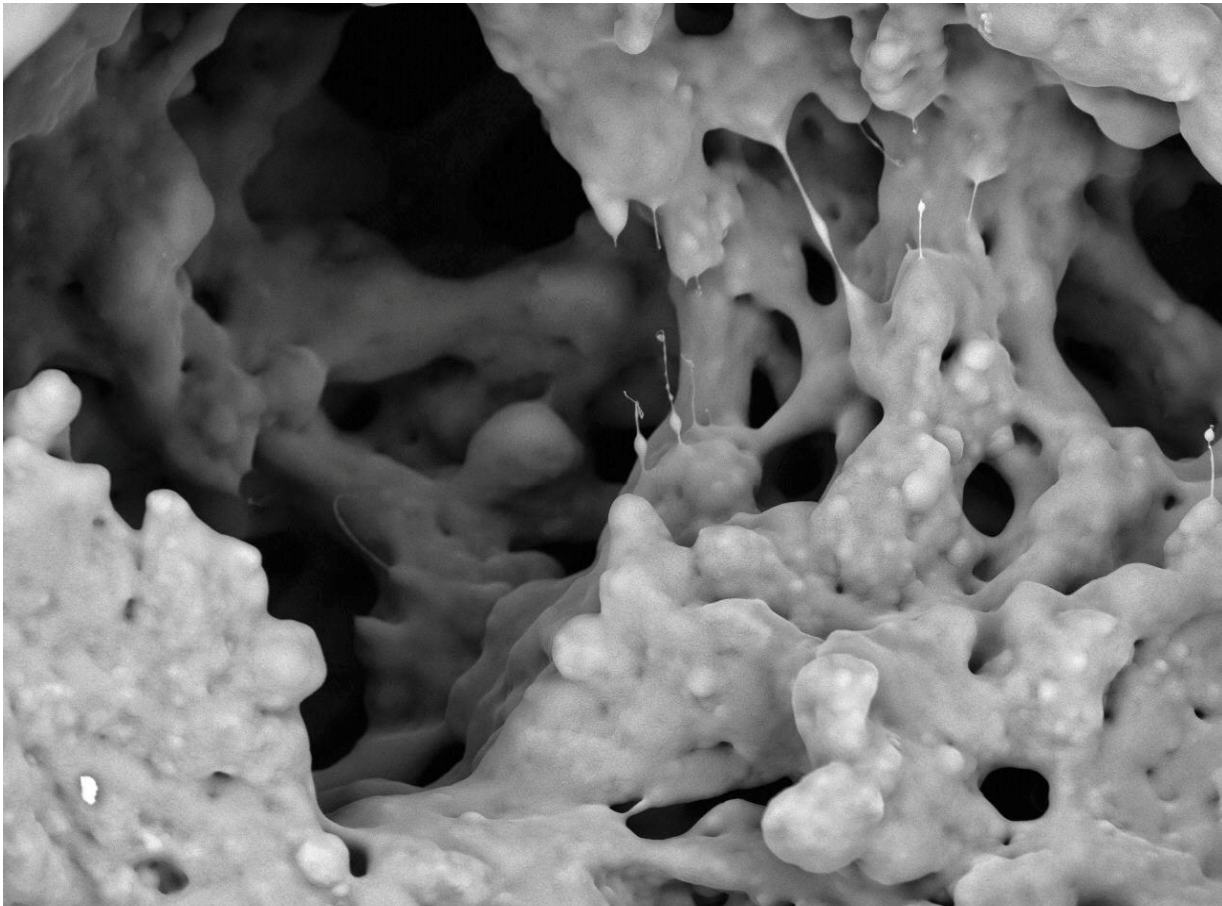
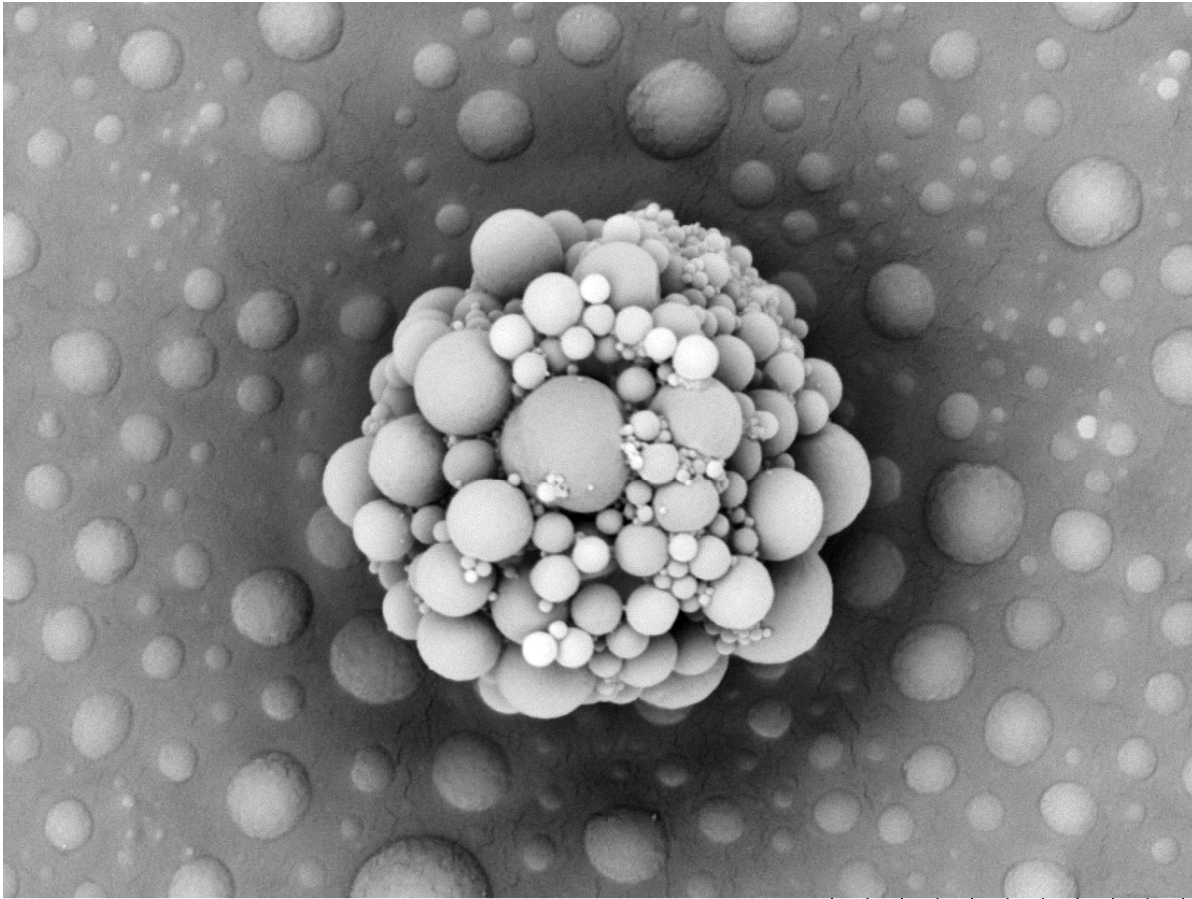


2nd Scientific Photography Award



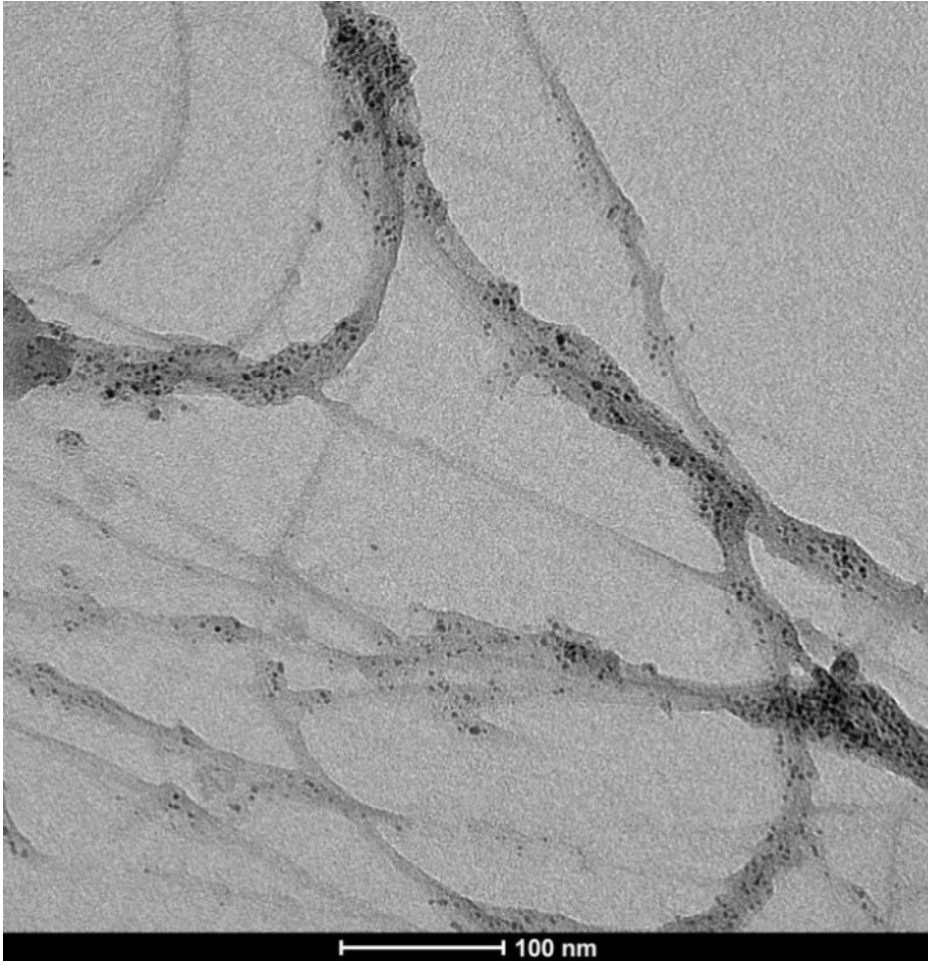
50 μm

SEM micrograph of polymer cavern

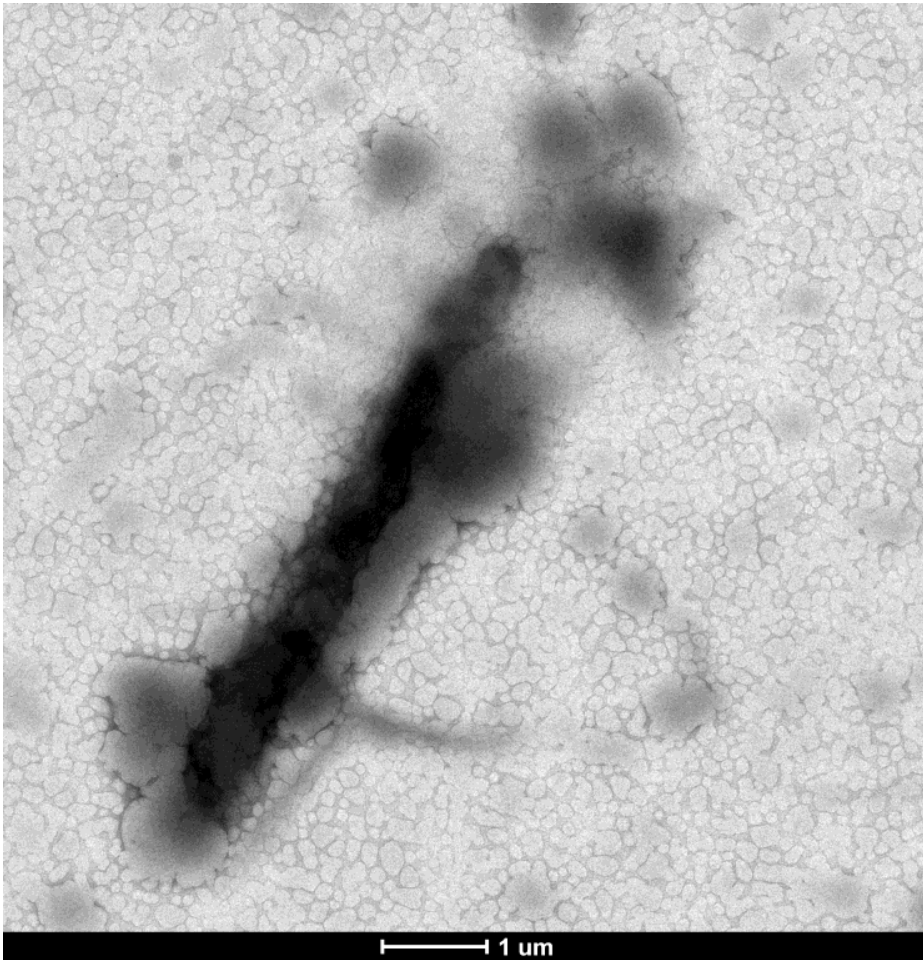


10 μ m

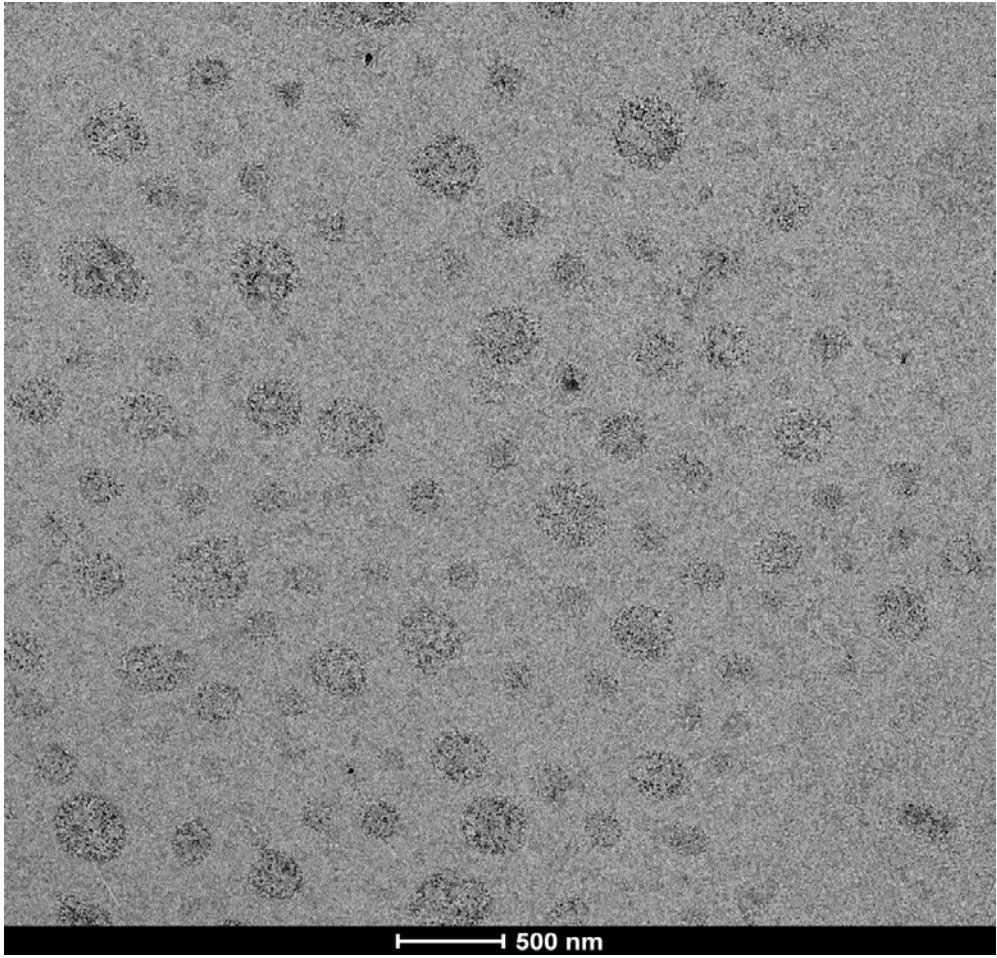
SEM micrograph showing multiscale roughness



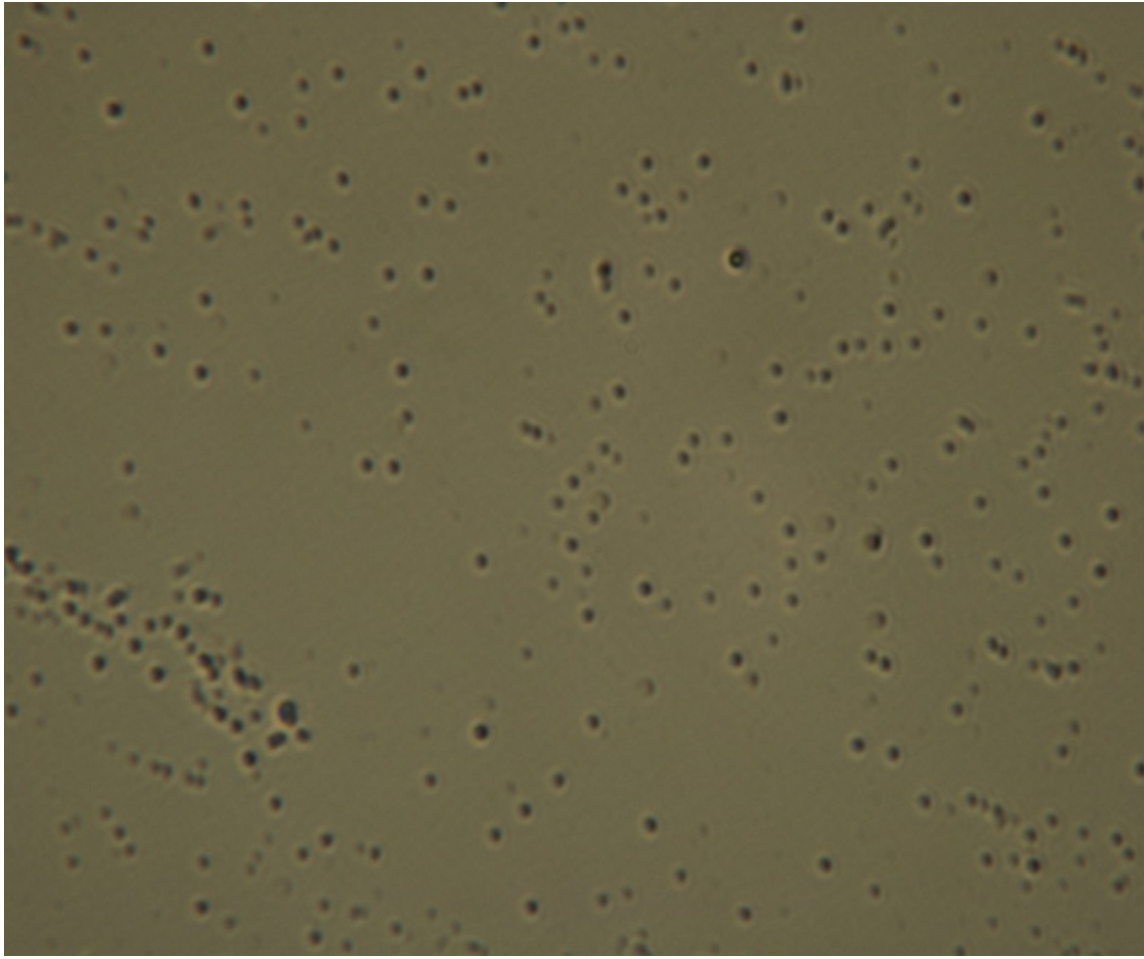
TEM image of single walled carbon nanotubes (SWCNTs) covered by synthetic surfactant



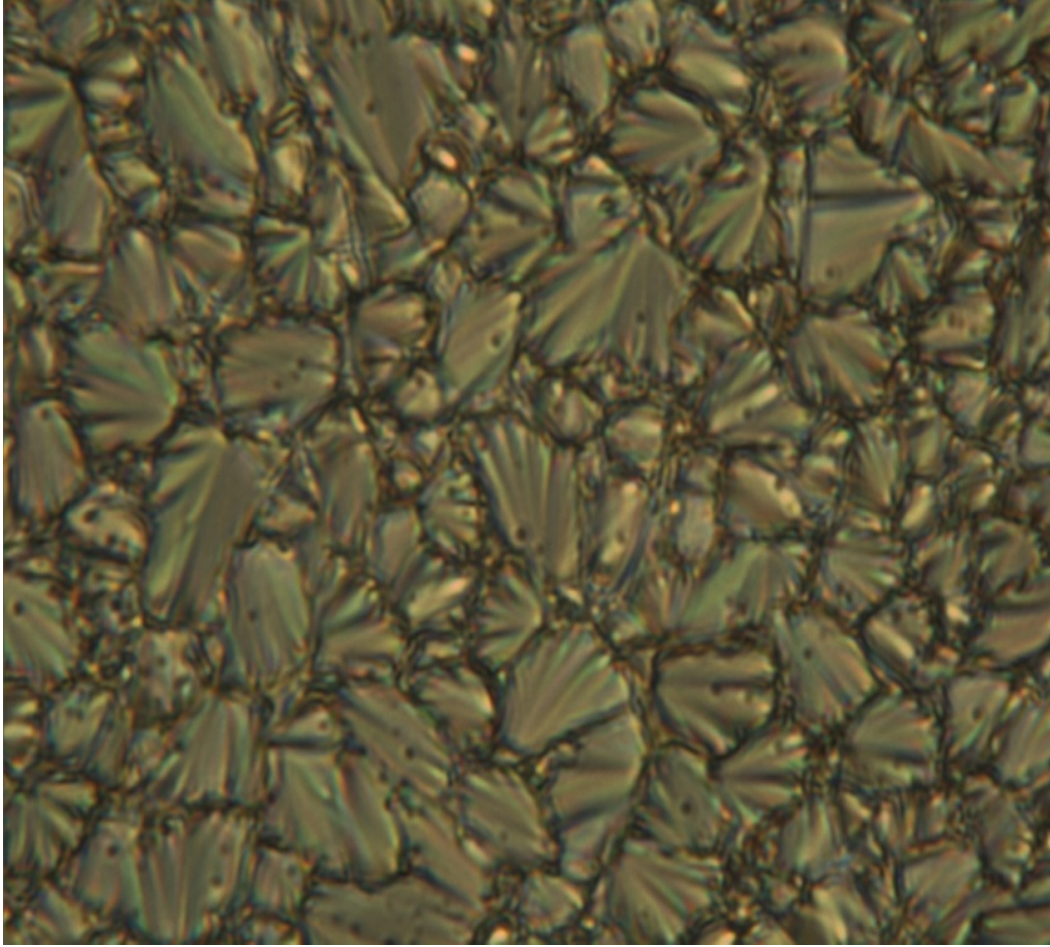
TEM image of a latex constituting of 20%wt sugar-based monomer and 80%wt butyl acrylate



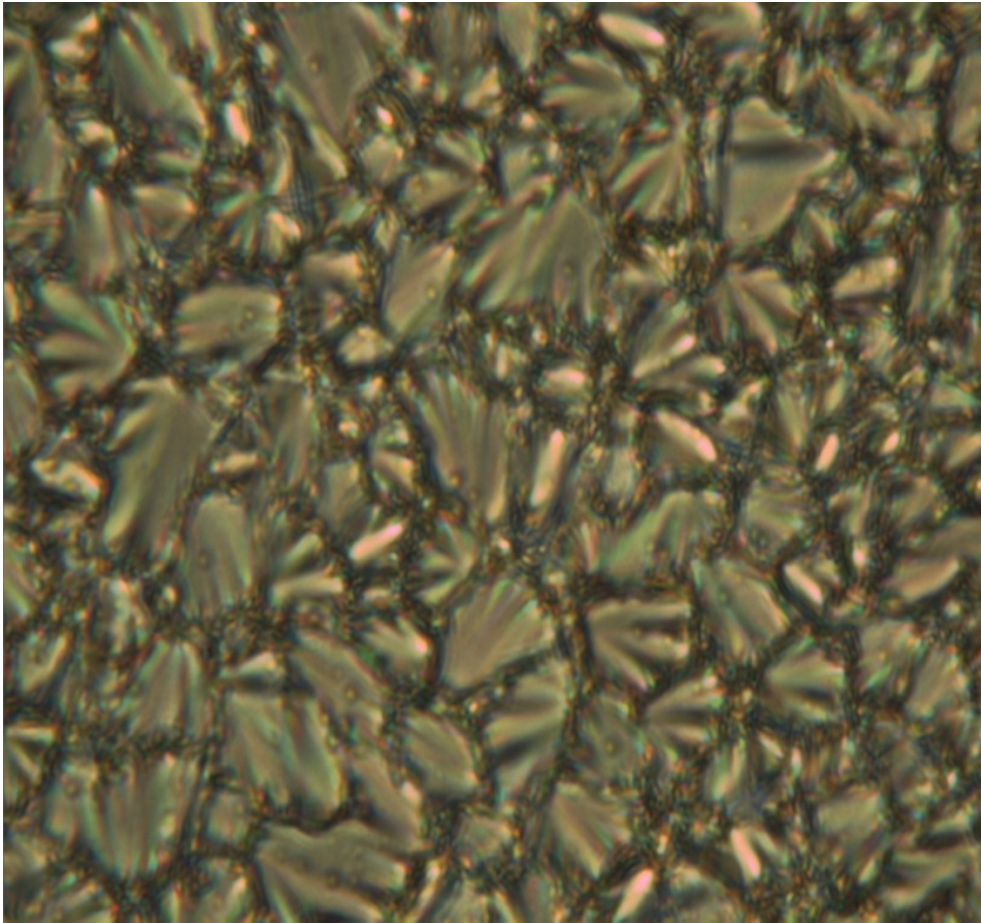
TEM image of self assembled polyDADMAC (5mg/L) using 0,05% of KOH salt in respect to the amount of PIL



POM images upon cooling of PLC at 220°C: Isotropic state



POM images upon cooling of PLC Focal conic fan texture of the smectic A phase exhibited at 163°C



POM images upon cooling of PLC Focal conic fan texture of the lower temperature smectic phase exhibited at 70°C